

**NPY5R Antibody**  
**Rabbit mAb**  
**Catalog # AP92766**

## Specification

---

### NPY5R Antibody - Product Information

Application	WB, FC, ICC
Primary Accession	<a href="#">Q15761</a>
Clonality	Monoclonal
<b>Other Names</b>	
NPY 5R; NPY R5; NPY Y5; NPY Y5 receptor; NPY5R; NPYR5; NPYY5;Y5 receptor;	
Isotype	Rabbit IgG
Host	Rabbit
Calculated MW	50727 Da

### NPY5R Antibody - Additional Information

Dilution	WB~~1:1000 FC~~1:10~50 ICC~~N/A
Purification	Affinity-chromatography
Immunogen	A synthesized peptide derived from human NPY5R
Description	Receptor for neuropeptide Y and peptide YY. The activity of this receptor is mediated by G proteins that inhibit adenylate cyclase activity. Seems to be associated with food intake. Could be involved in feeding disorders.
Storage Condition and Buffer	Rabbit IgG in phosphate buffered saline , pH 7.4, 150mM NaCl, 0.02% sodium azide and 50% glycerol. Store at +4°C short term. Store at -20°C long term. Avoid freeze / thaw cycle.

### NPY5R Antibody - Protein Information

**Name** NPY5R

**Synonyms** NPYR5

#### Function

Receptor for neuropeptide Y and peptide YY. The activity of this receptor is mediated by G proteins that inhibit adenylate cyclase activity. Seems to be associated with food intake. Could be involved in feeding disorders.

#### Cellular Location

Cell membrane; Multi-pass membrane protein.

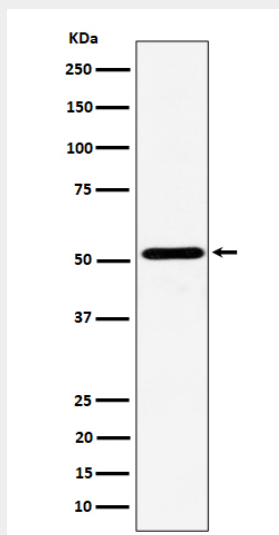
**Tissue Location**

Brain; hypothalamus.

**NPY5R Antibody - Protocols**

Provided below are standard protocols that you may find useful for product applications.

- [Western Blot](#)
- [Blocking Peptides](#)
- [Dot Blot](#)
- [Immunohistochemistry](#)
- [Immunofluorescence](#)
- [Immunoprecipitation](#)
- [Flow Cytometry](#)
- [Cell Culture](#)

**NPY5R Antibody - Images**

Western blot analysis of NPY5R expression in Ramos cell lysate.